

S10-29810A-01/75

POLSTORE STORAGE SYSTEMS

ISSUE DATE:

21.02.2022

UNIT 10 THE PINES TRADE CENTRE, BROAD STREET, GUILDFORD SY GU3 3BH

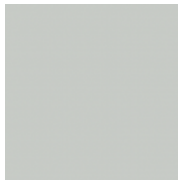
MOBILE DRAWER CABINET

AREA: WORKSHOP / GARAGE
QTY: 1
MODEL NO: S10-29810A-01/75
FINISH: RAL 7016 / RAL 7035 MATT
PRICE: **£435.00 + VAT**
LEAD TIME: 5-7 DAYS
WEBSITE: WWW.POLSTORE.CO.UK/OUTLET
DIMS (mm): 564 x 725 x 972mm high
WEIGHT (kg): 85kg

COLOUR:

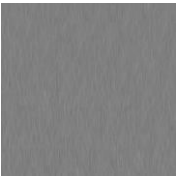
HOUSING: RAL 7035 LIGHT GREY

DRAWER FRONTS: RAL 7016
DARK GREY



MATERIAL:

METAL: MILD STEEL CR4



NOTES :

MOBILE DRAWER CABINET 564 WIDE X 725 DEEP X 972MM HIGH FITTED WITH 5 DRAWERS 85% EXTENSION 100KG SWL PER DRAWER. FRONT HEIGHTS (MM) 1X50 2X100 1X150 1X300. 2 FIXED / 2 SWIVAL BRAKED 100MM RUBBER CASTORS. PAPER / PLASTIC DRAWER LABELS INCLUDED. SINGLE DRAWER OPENING + SAFETY CATCH RHS INC 2 KEYS. COLOUR: RAL 7035 LIGHT GREY / RAL 7016 DARK GREY CONDITION: EX DEMO – VERY GOOD CONDITION

TERMS :

ALL PRICES EX VAT – DELIVERY CHARGES ARE NOT INCLUDED – COLLECTION FROM GU3 POSTCODE

SUPPLIER:

POLSTORE STORAGE SYSTEMS LIMITED
UNIT 10 THE PINES TRADE CENTRE
BROAD STREET
GUILDFORD SURREY
GU3 3BH

SUPPLIER CONTACT:

0800 008 6861
enquiries@polstore.co.uk
www.polstore.co.uk

REQUIRED ITEMS FOR APPROVAL PRIOR TO DESPATCH



DELIVERY ADDRESS



DATE REQUIRED



PAYMENT

