

10-21000-28/81

POLSTORE STORAGE SYSTEMS

ISSUE DATE:

14/01/2022

UNIT 10 THE PINES TRADE CENTRE, BROAD STREET, GUILDFORD SY GU3 3BH

WORKSHOP DRAWER CABINET

AREA: WORKSHOP / GARAGE
 QTY: 1
 MODEL NO: 10-21000-28/81
 FINISH: RAL 7035 Light grey / RAL 3002 Red
 PRICE: **£621.00 + VAT**
 LEAD TIME: 5-7 DAYS
 WEBSITE: WWW.POLSTORE.CO.UK/OUTLET
 DIMS (mm): 564 x 725 x 1000mm high
 WEIGHT (kg): 95kg



COLOUR:

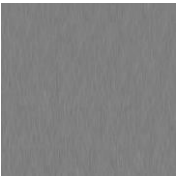
HOUSING: RAL 7035 LIGHT GREY

DRAWER FRONTS: RAL 3002 RED



MATERIAL:

METAL: MILD STEEL CR4



NOTES :

WORKSHOP DRAWER CABINET 564 WIDE X 725 DEEP X 1000MM HIGH FITTED WITH 9 DRAWERS
 100% EXTENSION 200KG SWL PER DRAWER. FRONT HEIGHTS (MM) 9X100. PAPER / PLASTIC DRAWER
 LABELS INCLUDED. SINGLE DRAWER OPENING INC 2 KEYS. COLOUR: RAL 7035 LIGHT GREY / RAL 3002
 RED. CONDITION: NEW HOUSING / DRAWERS EXCHANGED SO FEW MARKS – GOOD CONDITION

TERMS :

ALL PRICES EX VAT – DELIVERY CHARGES ARE NOT INCLUDED – COLLECTION FROM GU3 POSTCODE

SUPPLIER:

POLSTORE STORAGE SYSTEMS LIMITED
 UNIT 10 THE PINES TRADE CENTRE
 BROAD STREET
 GUILDFORD SURREY
 GU3 3BH

SUPPLIER CONTACT:

0800 008 6861
 enquiries@polstore.co.uk
 www.polstore.co.uk

REQUIRED ITEMS FOR APPROVAL PRIOR TO DESPATCH

DELIVERY ADDRESS DATE REQUIRED PAYMENT

