

## GROUP 4

# COMPUTER CABINETS & QUALITY STATIONS PRODUCT RANGE



ORGANISATION IS POWER

# Series 13-17

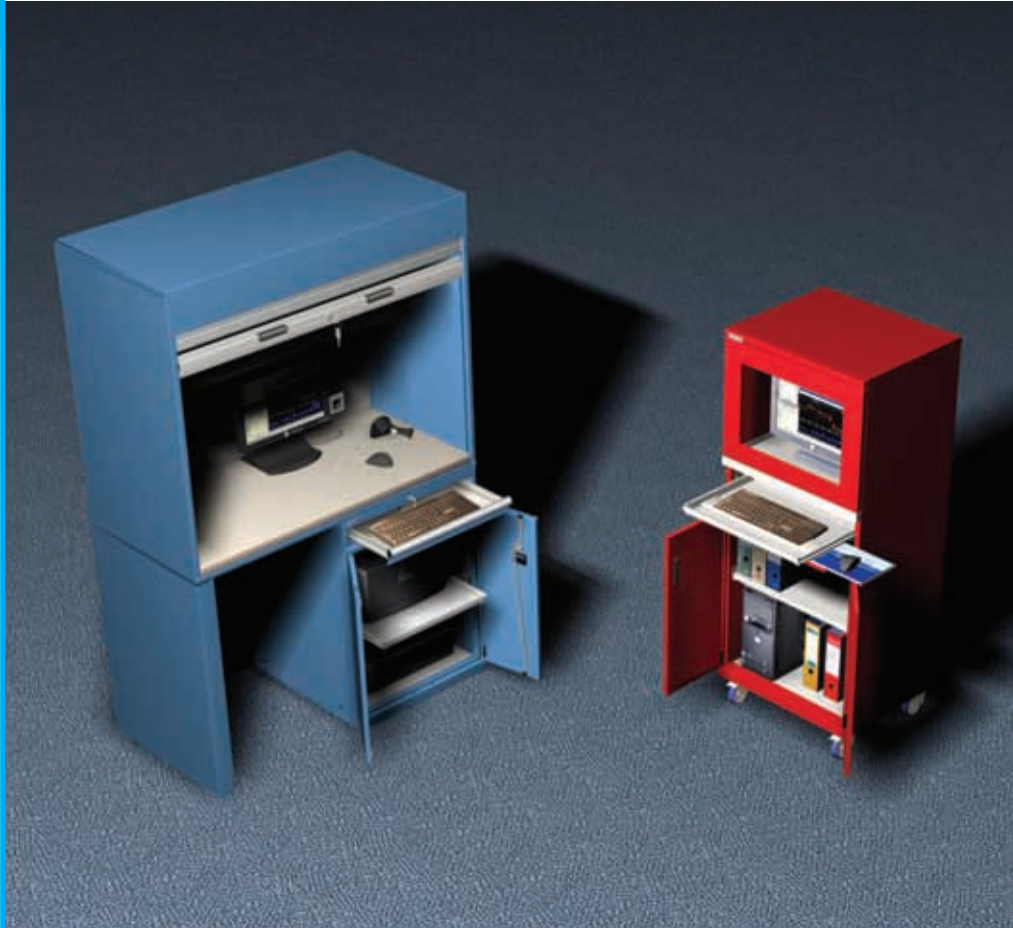


Computer cabinets  
see page 129



## Computer cabinets and Quality stations

Quality stations  
see page 132



### Standard colours:

RAL 5012 RAL 6011 RAL 7035





## Computer cabinets



### Cabinet housings

Made of high-quality sheet steel. Housing sides and bases are welded and painted with high resistance products, environmentally friendly. With slotted sides in increments of 25 mm to allow shelves to be adjusted accordingly.

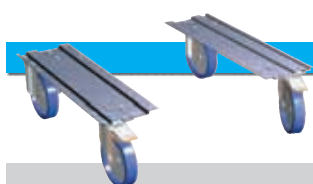
#### Cabinet features:

- Central locking system to close upper and lower compartment - keyed alike
- Monitor leaf door with Plexiglas® window for visibility
- Monitor compartment usable dims: 600x500x520mm (WxDxH)
- Retractable keyboard drawer with mouse holder
- Built-in ventilator and dust filter to protect equipment from overheating
- 4 standard European sockets with 1 mtr. connecting cable
- Lower compartment closed with leaf doors

Width mm	Depth mm	Height mm	Socket type	Socket type
			Schuko Part. No.	UK Part. No.
717	595	1625	<b>17-61620</b>	<b>17-61626</b>

Different types of sockets are available on request

Colours: see colour chart at the bottom of the page



### Castor sets, pairs

	Height mm	Pair Part. No.
with nylon castors Ø 100 mm	137	<b>06-28102</b>
with rubber castors Ø 100 mm	137	<b>06-28101</b>
with rubber castors Ø 150 mm	194	<b>06-28151</b>

Load capacity: 400kg with load evenly distributed

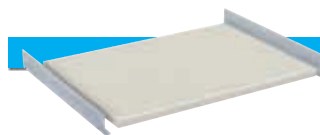
Supports made of steel



2 fixed and  
2 swivel braked  
nylon castors



2 fixed and  
2 swivel braked  
rubber castors



### Adjustable shelf

Made of steel. Lateral supports included

Usable width mm	Usable depth mm	Height mm	Load capacity kg	Part. No.
658	467	35	70	<b>17-60028</b>

Colour: Light grey RAL 7035

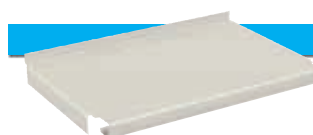


### Retractable shelf

Made of high-quality steel

Usable width mm	Usable depth mm	Height mm	Extension %	Load capacity kg	Part. No.
612	459	35	85	50	<b>17-63900</b>

Colour: Light grey RAL 7035



### Lower shelf

Made of high-quality steel

Usable width mm	Usable depth mm	Height mm	Load capacity kg	Part. No.
660	467	55	50	<b>17-60034</b>

Colour: Light grey RAL 7035



### Cabinet bases

Made of high-quality steel

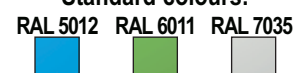
	Width mm	Depth mm	Height mm	Part. No.
<b>1</b> Base plinth	717	540	50	<b>05-43505</b>
<b>1</b> Base plinth	717	540	130	<b>05-43513</b>
<b>2</b> Pallet base	717	506	100	<b>05-13510</b>
<b>3</b> Cover plate	717	-	100	<b>05-33610</b>

Colour: Black



Load capacity is intended  
for evenly distributed loads

Standard colours:



# Series 17



Standard examples:

## Static computer cabinets:



AS

Size: 717x595x1625 mm

Socket type	Part. No.
UK	17-61626-01

Fittings:

- 1 Adjustable shelf
- 1 Lower shelf



AS

RS S

Size: 717x595x1625 mm

Socket type	Part. No.
UK	17-61626-02

Fittings:

- 1 Adjustable shelf
- 1 Retractable shelf

## Mobile computer cabinets:



AS

Size: 717x595x1762 mm

Socket type	Part. No.
UK	17-61626-05

Fittings:

- 1 Adjustable shelf
- 1 Lower shelf
- 2 fixed and 2 swivel braked, rubber castors, Ø 100 mm



AS

RS S

Size: 717x595x1762 mm

Socket type	Part. No.
UK	17-61626-06

Fittings:

- 1 Adjustable shelf
- 1 Retractable shelf
- 2 fixed and 2 swivel braked, rubber castors, Ø 100 mm

### Standard colours:

RAL 5012 RAL 6011 RAL 7035





# Series 13

## Accessories for Quality Stations:

### Quality Stations with roller shutter door

#### Worktops



#### Basic Hardware Cabinet



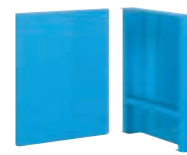
#### Hardware Cabinet with Keyboard Drawer



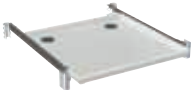
#### Standard Drawer Cabinet



#### Closed leg



#### Retractable shelf



#### Adjustable shelf



#### Lower shelf



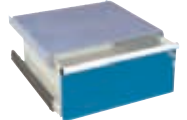
#### Drawer-S



#### Drawer-T



#### Drawer with single lock



#### Supports with Castors



#### Cabinet Bases





# Series 13

4



**Roller shutter cabinets for Quality Stations**

Made of high-quality sheet steel, painted with high resistance products, environmentally friendly. To be fitted to the cabinets and/or closed legs, consisting of robust metal housing and plastic horizontal profiles with hand grip for easy operation. Sides are slotted to allow shelves to be adjusted accordingly. Equipped with safety cylinder lock with 2 keys.

Width mm	Depth mm	Height mm	Plastic laminated Part. No.	Multiplex Part. No.
1431	725	1200	<b>13-50210</b>	<b>13-50220</b>

Colours: see colour chart at the bottom of the page



**Adjustable shelf**  
Made of high-quality steel

Usable width mm	Usable depth mm	Height mm	Load capacity kg	Part. No.
1379	300	35	70	<b>13-50232</b>

Colour: Light grey RAL 7035



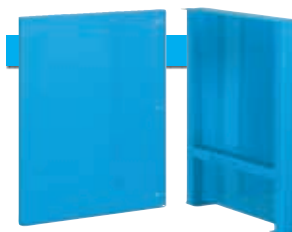
**Power trunking**  
Made of high-quality steel

Width mm	Depth mm	Height mm	Socket type	Socket type
			Schuko Part. No.	UK Part. No.
1379	55	150	<b>13-03130</b>	<b>13-03136</b>

With 5 sockets and ON/OFF switch

Different types of sockets are available on request

Colour: Light grey RAL 7035



**2** **1**

**Closed legs**  
**Back panels**  
Made of high-quality steel

**1 Closed leg**

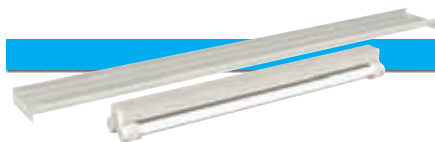
Height mm	Width mm	Depth mm	Part. No.
700	80	725	<b>13-10700</b>
800	80	725	<b>13-10800</b>
900	80	725	<b>13-10900</b>
1000	80	725	<b>13-11000</b>

Colours: see colour chart at the bottom of the page

**2 Back panel**

Height mm	Width mm	Depth mm	Part. No.
700	637	30	<b>13-10710</b>
800	637	30	<b>13-10810</b>
900	637	30	<b>13-10910</b>
1000	637	30	<b>13-11010</b>

Colours: see colour chart at the bottom of the page



**Overhead light**  
Supports included

Width mm	Depth mm	Watt	Part. No.
1379	150	2x36 W	<b>13-30012</b>

Power cable not supplied

Colour: Light grey RAL 7035

**Standard colours:**

RAL 5012 RAL 6011 RAL 7035





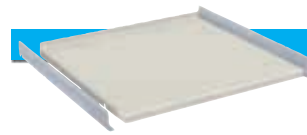


**Hardware Cabinet housings**  
with leaf doors

Made of high-quality sheet steel. Housing sides and bases are welded and painted with high resistance products, environmentally friendly. Available in different heights with sides slotted in increments of 25 mm to allow drawers to be adjusted accordingly. Doors fitted with safety cylinder lock and 2 keys. Electrical system and 1 mtr. connecting cable included.

Width mm	Depth mm	Height mm	Socket type	Socket type
			Schuko Part. No.	UK Part. No.
717	725	700	<b>13-30710</b>	<b>13-30716</b>
717	725	800	<b>13-30810</b>	<b>13-30816</b>
717	725	1000	<b>13-31010</b>	<b>13-31016</b>

Different types of sockets are available on request  
Colours: see colour chart at the bottom of the page

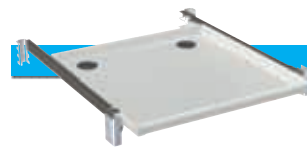


**Adjustable shelf**

Made of steel. Lateral supports included

Usable width mm	Usable depth mm	Height mm	Load capacity kg	Part. No.
658	620	35	70	<b>33-72038</b>

Colour: Light grey RAL 7035



**Retractable shelf**

Made of high-quality steel

Usable width mm	Usable depth mm	Height mm	Extension %	Load capacity kg	Part. No.
612	612	35	85	50	<b>13-33900</b>

Colour: Light grey RAL 7035



75 S

**Hardware Cabinet housings**  
with leaf doors and keyboard drawer

Made of high-quality sheet steel. Housing sides and bases are welded and painted with high resistance products, environmentally friendly. Available in one height only with sides slotted in increments of 25 mm to allow drawers and shelves to be adjusted accordingly. Fitted with central locking system, safety cylinder lock with 2 keys and single drawer opening system. Electrical system and 1 mtr. connecting cable included.

Width mm	Depth mm	Height mm	Socket type	Socket type
			Schuko Part. No.	UK Part. No.
717	748	1000	<b>13-41010</b>	<b>13-41016</b>

Different types of sockets are available on request  
Colours: see colour chart at the bottom of the page

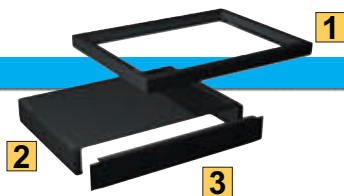


**Lower shelf**

Made of high-quality steel

Usable width mm	Usable depth mm	Height mm	Load capacity kg	Part. No.
660	618	55	50	<b>10-30034</b>

Colour: Light grey RAL 7035

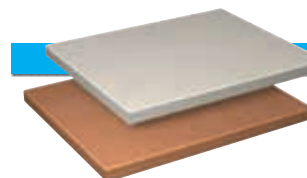


**Cabinet bases**

Made of high-quality steel

	Width mm	Depth mm	Height mm	Part. No.
<b>1</b> Base plinth	717	693	50	<b>05-43605</b>
<b>1</b> Base plinth	717	693	130	<b>05-43613</b>
<b>2</b> Pallet base	717	659	100	<b>05-13610</b>
<b>3</b> Cover plate	717	-	100	<b>05-33610</b>

Colour: Black



**Work surfaces for cabinets**

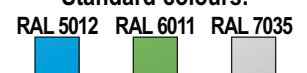
Width mm	Depth mm	Thickness mm	Multiplex Part. No.	Plastic laminated Part. No.
717	750	40	<b>10-30012</b>	-
717	750	30	-	<b>10-30014</b>

Colour: Plastic laminated Light grey RAL 7035



Electrical system is supplied with a fan and power trunking with 4 sockets and ON/OFF switch

Standard colours:





# Series 13

4



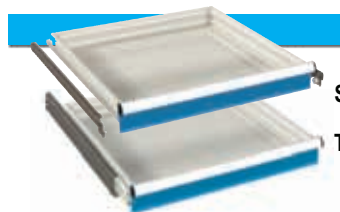
## Cabinet housings 36x36 Eh

Made of high-quality sheet steel. Housing sides and bases are welded and painted with high resistance products, environmentally friendly. Available in different heights with sides slotted in increments of 25 mm to allow drawers to be adjusted accordingly. Fitted with central

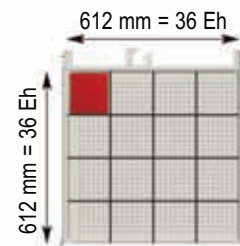
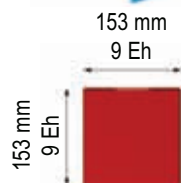
locking system, safety cylinder lock with 2 keys and single drawer opening system.

Width mm	Depth mm	Height mm	Usable height mm	Part. No.
717	725	700	600	<b>10-30700</b>
717	725	800	700	<b>10-30800</b>
717	725	1000	900	<b>10-31020</b>

Colours: see colour chart at the bottom of the page



## Drawers 36x36 Eh



Made of high-quality sheet steel.

Available in two versions (simple or total extension) with steel roller bearings. All 4 drawer walls are slotted, for custom sub-division using partitioning material. All drawer handles are equipped with aluminium profiles, end caps and labelling strips.

Front height mm	Usable height mm	Lateral height mm	Load capacity kg *	Part. No.
50 S	36	33	60	<b>10-33050</b>
75 S	61	52	80	<b>10-33075</b>
75 T	54	52	200	<b>10-33076</b>
100 S	86	77	100	<b>10-33100</b>
100 T	79	77	200	<b>10-33101</b>
125 S	111	77	100	<b>10-33125</b>
125 T	104	77	200	<b>10-33126</b>
150 S	136	127	100	<b>10-33150</b>
150 T	129	127	200	<b>10-33151</b>
175 T	154	127	200	<b>10-33176</b>
200 S	186	177	100	<b>10-33200</b>
200 T	179	177	200	<b>10-33201</b>
250 T	229	177	200	<b>10-33251</b>
300 S	286	277	100	<b>10-33300</b>
300 T	279	277	200	<b>10-33301</b>
400 T	379	277	200	<b>10-33401</b>

S = simple extension: 85 - 90% extension

T = total extension: 100% extension

\* with load evenly distributed and at least one slotted divider in the middle

Colour: Light grey RAL 7035 internal,

for drawer front see colour chart at the bottom of the page



## Cabinet bases

Made of high-quality steel

	Width mm	Depth mm	Height mm	Part. No.
<b>1</b> Base plinth	717	693	50	<b>05-43605</b>
<b>1</b> Base plinth	717	693	130	<b>05-43613</b>
<b>2</b> Pallet base	717	659	100	<b>05-13610</b>
<b>3</b> Cover plate	717	-	100	<b>05-33610</b>

Colour: Black



## Card insert and cellophane (spare part)

For drawers: 36 Eh

Part. No. **06-00365**

Kit: 30 pieces

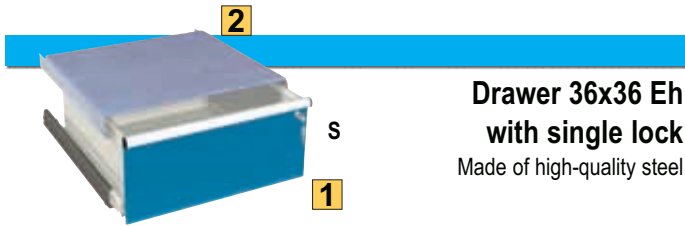
### Standard colours:

RAL 5012 RAL 6011 RAL 7035



Partitioning material  
see page 43





**Drawer 36x36 Eh with single lock**  
Made of high-quality steel

**1 Drawer with lock**

Front height mm	Usable height mm	Lateral height mm	Load capacity kg *	Part. No.
300 <b>S</b>	286	277	100	<b>13-33304</b>

**S** = normal extension: 85 - 90% extension

\* with load evenly distributed and at least one slotted divider in the middle

Colour: Light grey RAL 7035 internal,  
for drawer front see colour chart at the bottom of the page

**2 Cover shelf**

Width mm	Depth mm	Part. No.
661	693	<b>13-30002</b>

Made of high-quality sheet steel

Lateral supports included



**Work surfaces for cabinets**

Width mm	Depth mm	Thickness mm	Multiplex Part. No.	Plastic laminated Part. No.
1500	750	40	<b>13-30094</b>	<b>13-30084</b>

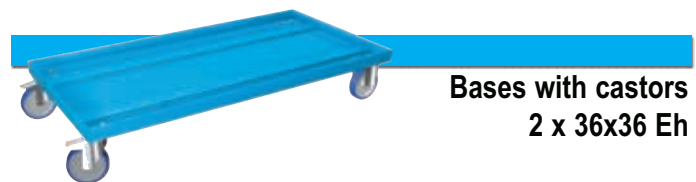
Colour: Plastic laminated Light grey RAL 7035



**Castor sets, pairs**

	Height mm	Pair Part. No.
with nylon castors Ø 100 mm	137	<b>06-37102</b>
with rubber castors Ø 100 mm	137	<b>06-37101</b>
with rubber castors Ø 150 mm	194	<b>06-37151</b>

Load capacity: 400kg with load evenly distributed  
Supports made of steel



**Bases with castors  
2 x 36x36 Eh**

Size: 1434x725 mm

	Height mm	Part. No.
with nylon castors Ø 100 mm	137	<b>06-39102</b>
with rubber castors Ø 100 mm	137	<b>06-39101</b>
with rubber castors Ø 150 mm	194	<b>06-39151</b>

Load capacity: 400kg with load evenly distributed  
Colours: see colour chart at the bottom of the page



2 fixed and  
2 swivel braked  
nylon castors



2 fixed and  
2 swivel braked  
rubber castors



# Series 13

4



Size: 1500x750x840 mm h

Socket type	Plastic laminated Part. No.	Multiplex Part. No.
UK	13-20816-01	13-20816-11

Fittings:

- 1 Worktop 40 mm thick
- 1 Hardware cabinet with: electrical system, 1 retractable shelf and 1 fixed lower shelf
- 1 Closed leg h 800mm
- 1 Back panel



100 T  
150 T  
150 T  
300 T

Size: 1500x750x840 mm h

Socket type	Plastic laminated Part. No.	Multiplex Part. No.
UK	13-20816-04	13-20816-14

Fittings:

- 1 Worktop 40 mm thick
- 1 Hardware cabinet with: electrical system, 1 retractable shelf and 1 fixed lower shelf
- 1 Cabinet 36x36 Eh with 4 drawers



Size: 1434x725x2000/840 mm h

Socket type	Plastic laminated Part. No.	Multiplex Part. No.
UK	13-90816-01	13-90816-11

Fittings:

- 1 Roller shutter cabinet with: 1 adjustable shelf and 1 worktop 40 mm thick
- 1 Hardware cabinet with: electrical system, 1 retractable shelf and 1 fixed lower shelf
- 1 Closed leg h 800mm
- 1 Back panel



100 T  
150 T  
150 T  
300 T

Size: 1434x725x2000/840 mm h

Socket type	Plastic laminated Part. No.	Multiplex Part. No.
UK	13-90806-04	13-90806-14

Fittings:

- 1 Roller shutter cabinet with: 1 adjustable shelf and 1 worktop 40 mm thick
- 1 cabinet 36x36 Eh with 4 drawers
- 1 Closed leg h 800mm
- 1 Back panel

**Standard colours:**

RAL 5012 RAL 6011 RAL 7035



Standard examples:



Size: 1500x750x1040 mm h

Socket type	Plastic laminated Part. No.	Multiplex Part. No.
UK	13-21016-01	13-21016-11

Fittings:

- 1 Worktop 40 mm thick
- 1 Hardware cabinet with keyboard drawer: electrical system, 1 retractable shelf and 1 fixed lower shelf
- 1 Closed leg h 1000mm
- 1 Back panel



Size: 1500x750x1040 mm h

Socket type	Plastic laminated Part. No.	Multiplex Part. No.
UK	13-21016-04	13-21016-14

Fittings:

- 1 Worktop 40 mm thick
- 1 Hardware cabinet with keyboard drawer: electrical system, 1 retractable shelf and 1 fixed lower shelf
- 1 Cabinet 36x36 Eh with 7 drawers



Size: 1434x725x2200/1040 mm h

Socket type	Plastic laminated Part. No.	Multiplex Part. No.
UK	13-91016-01	13-91016-11

Fittings:

- 1 Roller shutter cabinet with: 1 adjustable shelf and 1 worktop 40 mm thick
- 1 Hardware cabinet with keyboard drawer: electrical system, 1 retractable shelf and 1 fixed lower shelf
- 1 Closed leg h 1000mm
- 1 Back panel



Size: 1434x725x2200/1040 mm h

Socket type	Plastic laminated Part. No.	Multiplex Part. No.
UK	13-91016-04	13-91016-14

Fittings:

- 1 Roller shutter cabinet with: 1 adjustable shelf and 1 worktop 40 mm thick
- 1 Hardware cabinet with: electrical system, 1 retractable shelf and 1 fixed lower shelf
- 1 Cabinet 36x36 Eh with 3 drawers with single lock



Electrical system is supplied with a fan and power trunking with 4 standard UK sockets (240V) and ON/OFF switch

Standard colours:

